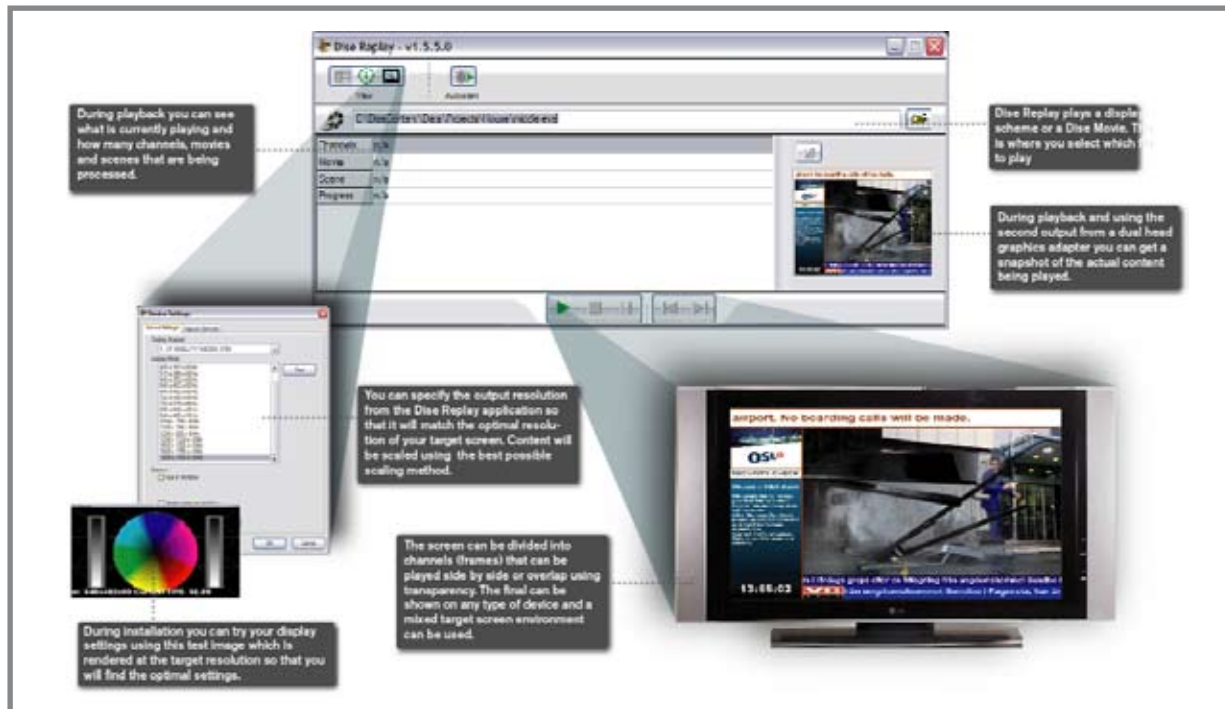


# DISE Replay

Real time broadcast quality play out with 24/7 operation.



DISE Replay is a digital signage player application. DISE Replay delivers reliable playback of broadcast quality graphics in any display application such as digital signage or TV play out. DISE Movies created in DISE Composer or Display Schemes assembled in DISE Bridge are dynamically played in real time.

## Dynamic content in real time

DISE Replay brings TV studio quality to digital signage applications. All layered presentations, scenes and objects are assembled in real time together with effects and conditional playback rules such as scheduling. The result is played using standard graphics cards for use on TV, LCD, Plasma or LED screens or distributed through third party streaming applications. DISE Replay requires a computer with Windows XP, Windows XP Embedded or Vista.

## Play out layered channels

DISE Replay plays display schemes created by DISE Bridge. A display scheme defines one or more channels. Each channel holds a play list. A Play list contains one or more DISE Movies. Each DISE Movie can be scheduled. This means that you can play multiple channels side by side or on top of each other using transparency masks or alpha channels.

## Output devices and settings

In the DISE Replay software you specify the output resolution you want to have from your graphics adapter. This enables you to select the resolution that is best suited for your for your target screen and play back with optimal image quality.

## DISE Replay and DISE Probe

DISE Probe is used together with DISE Replay on the player computer and downloads content prepared by DISE Bridge. DISE Probe enables DISE Replay to focus on providing uninterrupted play back and alerts Replay when new content is ready. DISE Probe also handles some monitoring of software and player hardware.

## Statistics and logging

DISE Replay and DISE Probe can be set to log statistics about when and where different DISE Movies, Scenes or DISE Objects have been played. In addition DISE Probe and DISE Replay logs any error messages.

